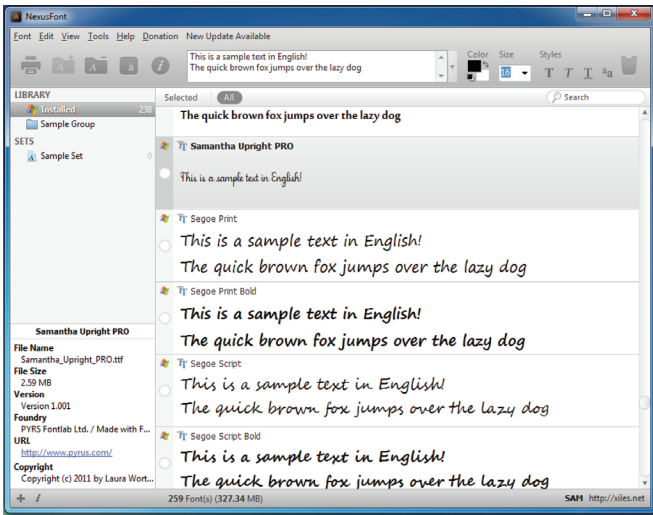
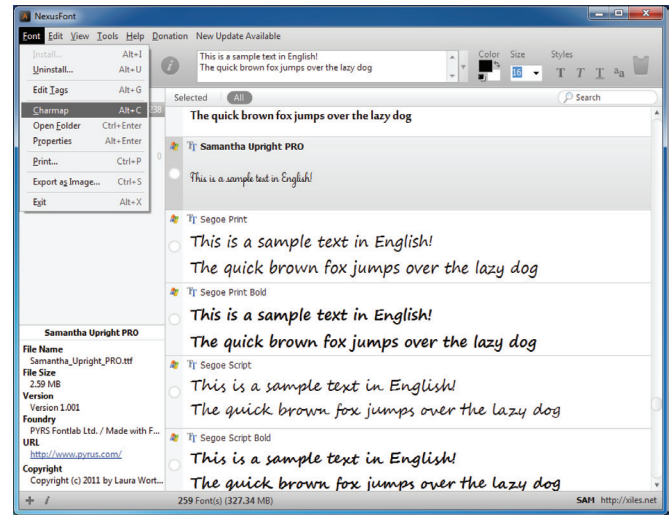


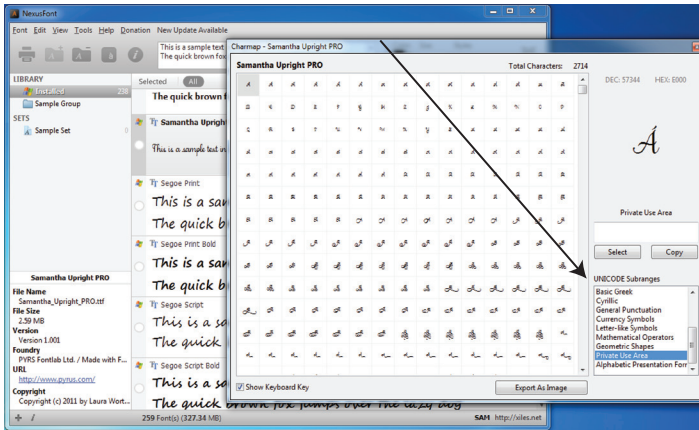
STEP ONE: Select font



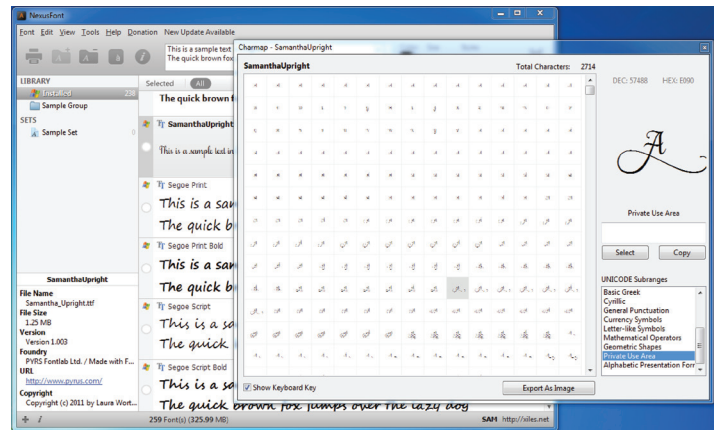
STEP TWO: select Charmap from Font menu



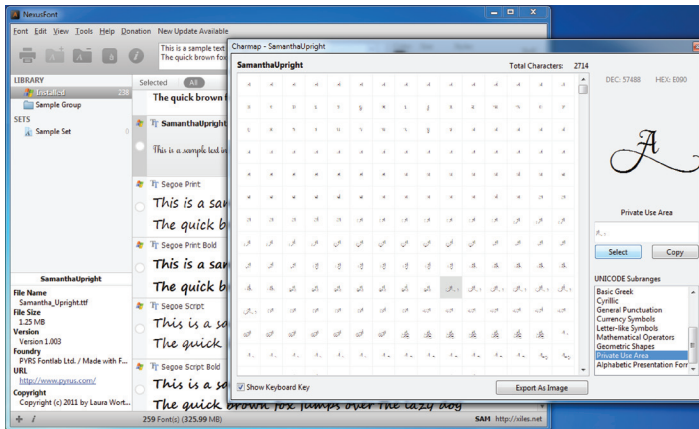
STEP THREE: in Unicode Subranges, select Private Use Area



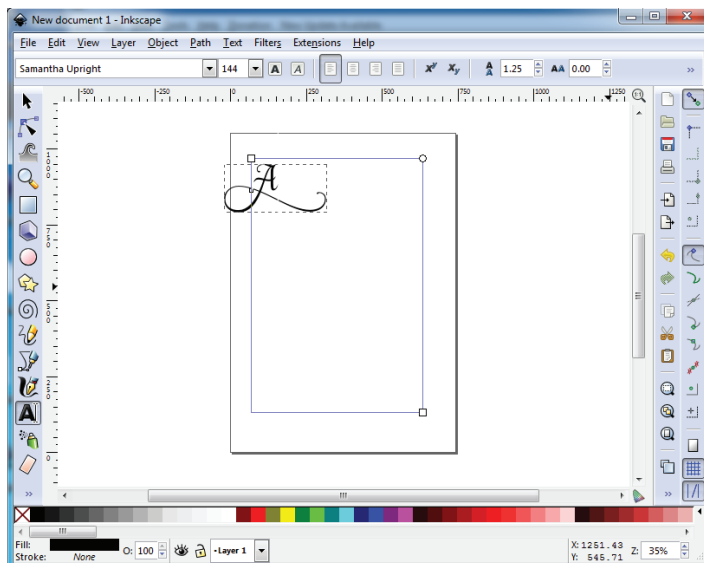
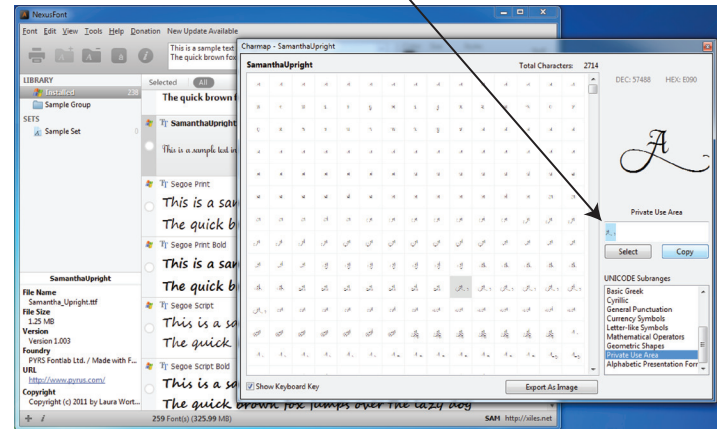
STEP FOUR: find and click on the glyph you want to use



STEP FIVE: click Select button



STEP SIX: select/highlight glyph with cursor, then click Copy button



STEP SEVEN: go to your document, draw a text box and from the font menu, select the same font you copied the glyph from in NexusFont and paste into the text box