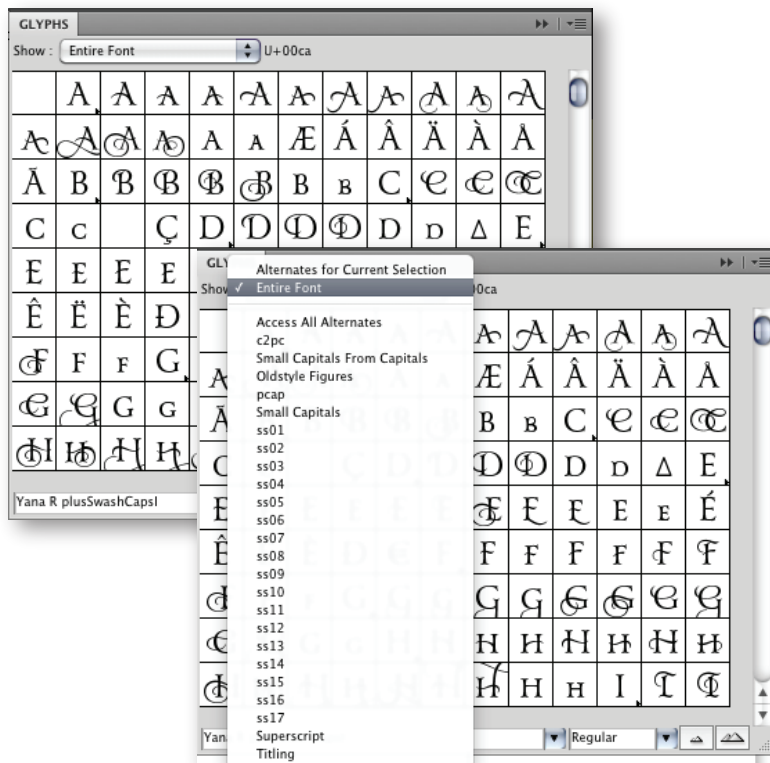
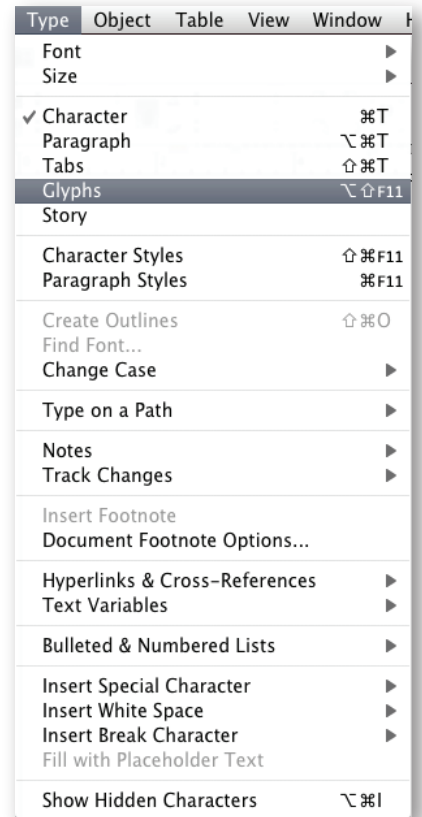


Using OpenType

Currently, the only programs that fully support all features of OpenType are Adobe CS InDesign, Illustrator and QuarkXPress (versions 7 and above). Adobe Photoshop supports some features of OpenType, but not all. For use in Photoshop, I recommend laying out your design in InDesign, Illustrator or QuarkXPress and then copy/paste into Photoshop.

If you are using a Mac OS but do not have one of the above mentioned programs, you may use Character Viewer. Visit the Apple.com website to get detailed instructions as use varies depending on what version of the Mac OS you are using.

I have found that selecting GLYPHS from the TYPE palette in both InDesign and Illustrator, is the easiest way to view and access all of the available alternates.



From here, you may choose how you want to sort the alternates. For example, if you highlight a glyph with the text tool, you can select 'Alternates for Current Selection', and view only those specific alternates for the glyph selected. With the text tool active, double click on your glyph of choice to insert it in the text.