



Laura
Worthington

Adorn

MONOGRAMS



Duo



USER'S GUIDE





FONT FAQ

HOW TO INSTALL YOUR FONT

You will receive your files as a zipped folder. For instructions on how to unzip your folder, visit LauraWorthingtonType.com/faqs/.

Your font is available in two formats: TrueType Font file (.ttf) and OpenType Font file (.otf).

If you have a Mac® or newer Windows® computer, install the .otf file(s). If you have an older Windows computer, install the .ttf files. Install the font by double-clicking on the .ttf or .otf file. When the pop-up menu appears, click on Install font (Mac) or Install (Windows). Fonts may also be installed by dragging and dropping them into your system's font folder.

After installing your font, save a copy of the downloaded font files in a folder on your computer as a resource in case you want to re-install the font or transfer it to a new computer.

HOW TO INSERT SWASHES,
ALTERNATES, AND ORNAMENTS

Some programs have a glyphs or symbol panel where the complete font including swashes and ornaments can be accessed and inserted directly. For programs that do not have a way to directly insert the swashes, the easiest method of putting in alternate swashes or symbols is by using either Character Map (Windows) or FontBook (Mac).

Character Map (Windows)

Character Map is a standard Windows utility and can be found in the Start Menu's accessories folder (Windows XP, Vista, 7) or in All Apps under Windows Accessories (Windows 8.1, 10). Character Map can also be found by searching for it by name.



Select your font from the drop-down menu. Character Map will show all available glyphs. To quickly find the swashes, change Group By to Unicode Subrange, and select Private Use Characters from the pop-up menu. Click on any swash and then copy and paste it into your document.

See the Character Map Video for a demonstration.

FontBook (Mac)

Font Book is a standard Mac utility program and can be found in Finder under the Go menu under Applications. Once FontBook is open, go to the View menu and select Repertoire. Click on User in the left panel and then select the font name to see all available swashes in the font. Click on any swash and then copy and paste it into your document.

See the Font Book Video for a demonstration.

LICENSING

Your font comes with a standard one-user license. This license covers one person with up to five workstations (laptop, desktop computer, etc.) connected to one printer or output device. For more

than one user and/or more than five workstations, please contact me at help@lauraworthington.com for a multi-user license.

This font is available for both personal and commercial use. For details on licensing, please visit my FAQ page at LauraWorthingtonType.com/faqs/.

FONT SUPPORT

Visit my FAQ page at LauraWorthingtonType.com/faqs/ for information on licensing, installation, and both general and software specific questions.

Contact me at help@lauraworthington.com and I will be happy to answer any questions.



Adorn  Duo

Adorn Duo is a monogram font, calligraphic and blossoming before your eyes. Simply type in the lowercase/uppercase letters and your monogram is finished! These monograms were carefully wrought: each combination of letters is a revelation of complex crafting, with no collisions or overlaps. Despite their intricacy and detail, these are not your grandmother's monograms. They are modern and bursting with personality. Worthington sketched

them in pencil, then used a fountain pen for contrast and detail before digitization. Graphic designers will have their own uses for these; DIYers will see a takeoff point for jewelry, cards, invitations, rubber stamps— an endless source for personalizing and elevating the everyday, the special gathering, or a handmade creation. Up to 250 tangible products may be made for personal or commercial use with a one-user license.





Font Specifications

ADORN DUO

Part of the Adorn family of fonts

CHARACTERS:

52 characters

FONT FILES:

1 OpenType (.otf) file and 1 TrueType (.ttf) file

AVAILABLE:

LauraWorthingtonType.com

OPENTYPE FAQ:

To access swashes, alternates, ornaments,
and for any OpenType questions,
go to LauraWorthingtonType.com/faqs

ORIGINAL RELEASE:

May 2014



Adorn Duo Monograms Instructions

Adorn Duo Monograms are programmed to work automatically through the ligature feature which is activated by default in most applications and web browsers. However, if this feature is not enabled or available, you will need to set the monogram by hand.

For the left letter, simply type in a lowercase letter followed by an uppercase letter and your monogram will be complete!

Eg. Type a lowercase 'a' ...



... followed by an uppercase 'B'.

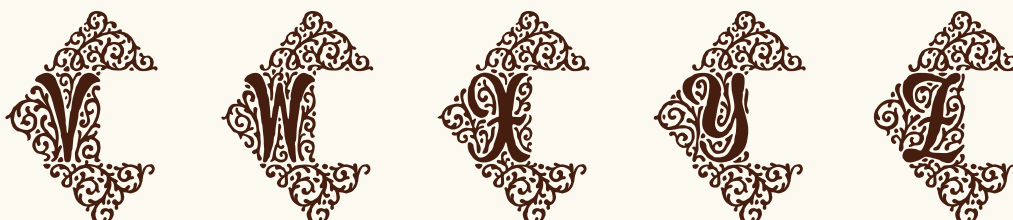
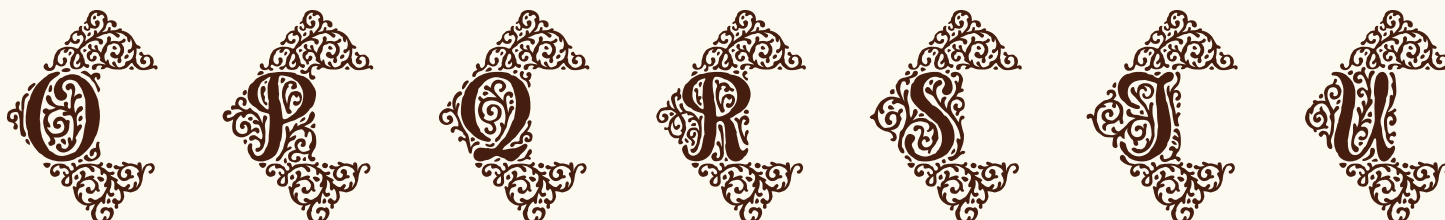


Characters:

A B C D E F G H I
J K L M N O P Q R
S T U V W X Y Z



Left



Right

A

B

C

D

E

F

G

H

I

J

K

L

M

N

O

P

Q

R

S

T

U

V

W

X

Y

Z